

Standard Preparation

2400 mm Sink with 2 Bowls & 2 Drains

ITEM # _____

MODEL # _____

NAME # _____

SIS # _____

AIA # _____


133248 (LG2426N)

 Sink unit with 2 bowls
 600x500mm and 2 drainers,
 2400mm

Short Form Specification

Item No.

Made from 304 AISI stainless steel. The 50mm high worktop in 304 AISI stainless steel, 1mm in thickness, is sound-deadened and has an overflow rim and welded corners. Integral rear upstand, h=100mm, with 8mm radius. All-round apron. Square section legs 40x40mm on 1" height-adjustable feet (+/-20mm)
 N. 2 bowls mm600x500x300h with overflow pipe and 2"drain hole; N. 2 drainers.

Construction

- 50 mm worktop in 304 AISI stainless steel, 10/10 in thickness with overflow rim along the top.
- Sink bowl in 304 AISI stainless steel, supplied with overflow drain pipe and drain hole.
- 100 mm upstand with 8 mm radiused corner and 13 mm deep, designed to be used against a wall.
- Square section legs and 40 mm height-adjustable feet in 304 AISI stainless steel.
- Sink tops easily slotted onto the legs and taps are easily installed from the rear.
- Accessories available on request: lower shelf, tap unit, false bowl bottom, overflow filter, single or double syphons.

Optional Accessories

- Elbow operated mixer tap with spout, 3/4" single hole PNC 855322 ☐
- Elbow operated mixer tap with spout, 3/4" single hole PNC 855374 ☐
- Elbow operated mixer tap with short spout, 3/4" single hole PNC 855375 ☐
- Single hole deck mounted mixing temperature monoblock faucet PNC 855382 ☐
- Single hole deck mounted extra robust pot filling mixing temperature faucet PNC 855383 ☐
- Single hole deck mounted mixing temperature faucet with short spout PNC 855384 ☐
- Single hole deck mounted mixing temperature pre-rinse unit PNC 855385 ☐
- Single hole deck mounted elbow operated mixing temperature faucet with pre-rinse unit PNC 855386 ☐
- Single hole deck mounted riser add-on mixing temperature faucet with pre-rinse unit PNC 855387 ☐
- Single hole deck mounted elbow operated mixing temperature faucet with short pre-rinse unit PNC 855388 ☐
- Single hole deck mounted add-on mixing temperature faucet with pre-rinse unit PNC 855389 ☐
- Single hole deck mounted mixing temperature faucet with pre-rinse unit PNC 855390 ☐
- Floor fastening kit for 2 square legs PNC 865386 ☐
- False bottom for right hand 600x500mm bowl PNC 895100 ☐

APPROVAL: _____

- Overflow filter for bowl (H=180 mm) PNC 895130 ☐
- Overflow filter for bowl (H=230 mm) PNC 895131 ☐
- Overflow filter for bowl (H=330 mm) PNC 895132 ☐
- False bottom for right and left hand 500x500 mm bowl PNC 895200 ☐
- Single plastic drain syphon 2" for sinks PNC 895313 ☐

Standard Preparation

2400 mm Sink with 2 Bowls & 2 Drains

Key Information:

External dimensions, Width:

133248 (LG2426N) 2400 mm

**External dimensions,
Depth:**

700 mm

**External dimensions,
Height:**

1000 mm

Upstand Dimensions, Height:

100 mm

**Upstand Dimensions,
Depth:**

13 mm

Upstand Dimensions, Radius:

R=8

Bowls number

2

Bowl dimensions

600x500xH300

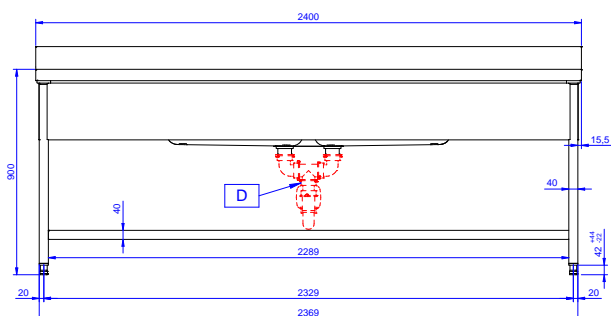
Worktop thickness:

50 mm

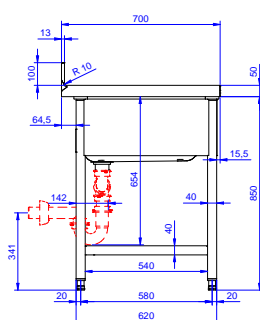
Net weight:

70 kg

Front



Side



D = Drain

Top

